

Navigation features

Waypoints:
 Total: 3000 with 10 characters (name and symbol)
 Nearest: Continuously updated; Airport, VOR, NDB, INT, user, ARTCC, FSS, airspace, Wx, city

Routes: 50 reversible routes with up to 300 points each

Tracks: 10,000 point automatic track log; 15 saved tracks; 1,000 points per saved track; lets you retrace your path in both directions

Map datums: More than 100 plus user datum

Position format: Lat/Lon, UTM/UPS, Maidenhead, MGRS, Loran TDs and other grids, including user grid

GPS performance

Receiver: WAAS enabled, high-sensitivity GPS receiver continuously tracks and uses up to 12 satellites to compute and update your position

Acquisition times:
 Warm: Less than 5 seconds
 Cold: Less than 45 seconds
 AutoLocate™: Less than 60 seconds

Update rate: 5/second, continuous

GPS accuracy:
 Position: < 10 meters*
 Velocity: 0.05 meter/sec steady state

DGPS (WAAS) accuracy:

Position: < 5 meters
 Velocity: 0.05 meter/sec steady state

Interfaces: RS232 port with NMEA 0183 data format and proprietary GARMIN USB interface. Accepts Aviation input format from panel-mount GPS. Also can connect to Garmin SL30 and SL40 for frequency tuning and GTX 330 for TIS traffic alerts.

GPS Antenna: Internal
Differential: WAAS

Moving map features

Basemap: Built-in basemap shows roads, lakes, rivers, metro areas and surface features

Database: Built-in-navigation database with terrain and obstacle data bases**. Includes Americas, Atlantic International, or Pacific International coverage, plus airport, FSS, ARTCC, and weather frequencies.

GPSMAP 696 includes locations for private airports and heliports (U.S. and Europe) and visual reporting points (Europe). Garmin SafeTaxi data supports detailed airport and taxiway diagrams at over 900 U.S. airports.

Included Garmin FliteCharts®, which contains all published instrument approach plates and terminal procedures (U.S. only).

Approach waypoints: Navigation data also includes final approach sequence waypoints for all published approaches

AOPA Airport Directory
 Included AOPA directory contains detailed information on over 7,400 U.S. airports, along with airports of entry for Canada, Mexico and the Caribbean. Includes names and telephone numbers of aircraft services, fuel outlets, transportation, and more.

Custom POIs: Supports user-created custom points-of-interest (POI) data, using Garmin's free POI Loader software.

Uploadable maps: Supports optional detailed maps

Power

Source: Replaceable, rechargeable Nickel-Metal Hydrid battery
Battery life: 2.5 - 8 hours of use (nominal)

Physical

Size: 5.7"W x 7.7"H x 2.0"D (14.4 x 19.6 x 5.1 cm)
Weight: 2.2 lb (1 kg) with battery
Display: 7.0" diagonal (17.78 cm) 480 x 800 pixels, color sunlight readable WVGA TFT with adjustable back-lighting

User data storage: Indefinite

Accessories

- Standard**
- Protective cover
 - USB interface cable
 - GA 25 external GPS antenna
 - GXM 40 smart antenna
 - Free single database update (includes Navigation, FliteCharts®, SafeTaxi®, obstacles and towers)
 - 12-volt vehicle power cable
 - Yoke mount
 - Owner's manual
 - Quick reference guide
 - AC Adapter
- Optional:**
- MapSource CD-ROMs
 - Additional NiMH battery pack
 - Knee mount
 - Carrying case
 - Power data cable (to hardwire power/interface)

GPSMAP® 696/695

Go anywhere GPS portables with large-format multifunction display.



Garmin International, Inc.
 1200 East 151st Street, Olathe, KS 66062
 p: 913.397.8200 f: 913.397.8282

Garmin (Europe) Ltd., Liberty House, Hounsdown Business Park, Southampton, Hampshire, SO40 9RB, U.K. p: 44.1794.519944 f: 44.1794.519222

Garmin Corporation, No. 68, Jangshu 2nd Road, Shijr, Taipei County, Taiwan 886.2.2642.9199 fax 886.2.2642.9099

Specifications are preliminary and subject to change without notice.

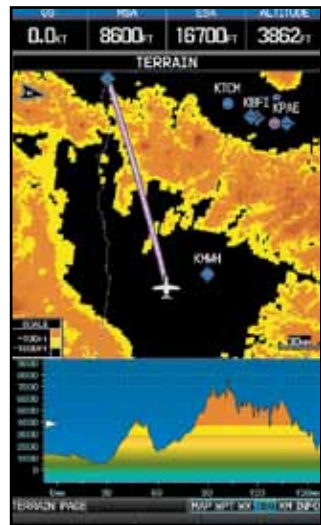
* Subject to accuracy degradation to 100m 2DRMS under the United States Department of Defense-imposed Selective Availability (SA) program

** Obstacle data available only for U.S.A. and Europe

Large-format MFD meets portable GPS

With features that focus on aviation navigation and mapping, the GPS-MAP® 696 is Garmin's ultimate portable MFD. It provides Class 1/ Class 2 electronic flight bag (EFB) capabilities, with preloaded U.S. FliteCharts® instrument approach plates, terminal procedures, SafeTaxi® airport diagrams, low and high altitude airways, AOPA Airport Directory and more. It's also a portable GPS navigator with high-sensitivity receiver, realistic moving-map graphics, big 7-inch high-definition display, rotary joystick cursor control, softkeys for fast data entry, and database-driven terrain and obstacle alerting. It offers

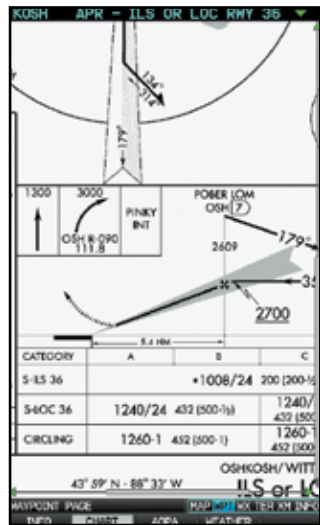
support for NEXRAD images and all the other great XM WX® satellite weather capabilities¹, including new icing forecast as well as pilot reports. Plus, you can even use the optional XM Radio capability to enjoy 170+ channels of digital music, news and programming through your aircraft headset or cabin audio system¹. It's never been so easy to get the big picture from a portable. And for operators outside the XM coverage area, Garmin's GPSMAP® 695 model offers similar functionality, without the XM satellite weather/entertainment capabilities.



Terrain page offers overhead and vertical profile views



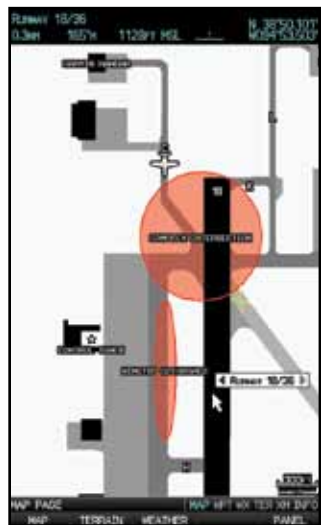
XM Radio support lets you enjoy 170+ audio channels¹



Users can pan and zoom to focus on specific chart details



Realistic satellite imagery gives you the "big picture"



Taxiway diagrams for 900+ U.S. airports with "Hot Spots"



Available XM WX® data includes potential icing forecasts¹



AOPA Airport Directory holds data on 5,300+ U.S. airports



Split-screen combines map with GPS panel display



Optional XM WX® weather can overlay on moving map¹



IFR map mode shows high and low enroute airways

Key product features:

- Garmin FliteCharts® offer NACO-format IFR approach plates and terminal procedures for airports throughout the U.S.
- Garmin SafeTaxi® data provides detailed taxiway diagrams and position information for over 900 U.S. airports.
- Color-keyed terrain page offers both overhead and vertical profile views of potentially hazardous terrain along your route of flight.
- AOPA Airport Directory data offers detailed information on over 5,300 U.S. airports, along with airports of entry for Canada, Mexico and the Caribbean. Includes names and phone numbers of FBOs and fuel/service facilities, plus ground transportation, ATC data, and more.
- IFR map mode displays Victor airways and Jet routes, derived from the navigation database.
- Traffic Information Service (TIS) alerts (where available) are supported via Garmin GTX 330 Mode S Transponder interface.
- Supports XM satellite weather data and audio entertainment¹ (GPSMAP 696 only)
- Garmin's Smart Airspace™ feature aids visual clarity on-screen – by de-emphasizing airspace that's well above or below the aircraft's current altitude.
- Fast 5 Hz GPS update speed gives a smoother, near "real-time" presentation of flight data for added realism and safety.
- To help keep pilots aware of special airspace activity, over 650 parachute drop zones are detailed in the Americas navigation database.

¹XM subscription required (sold separately)

