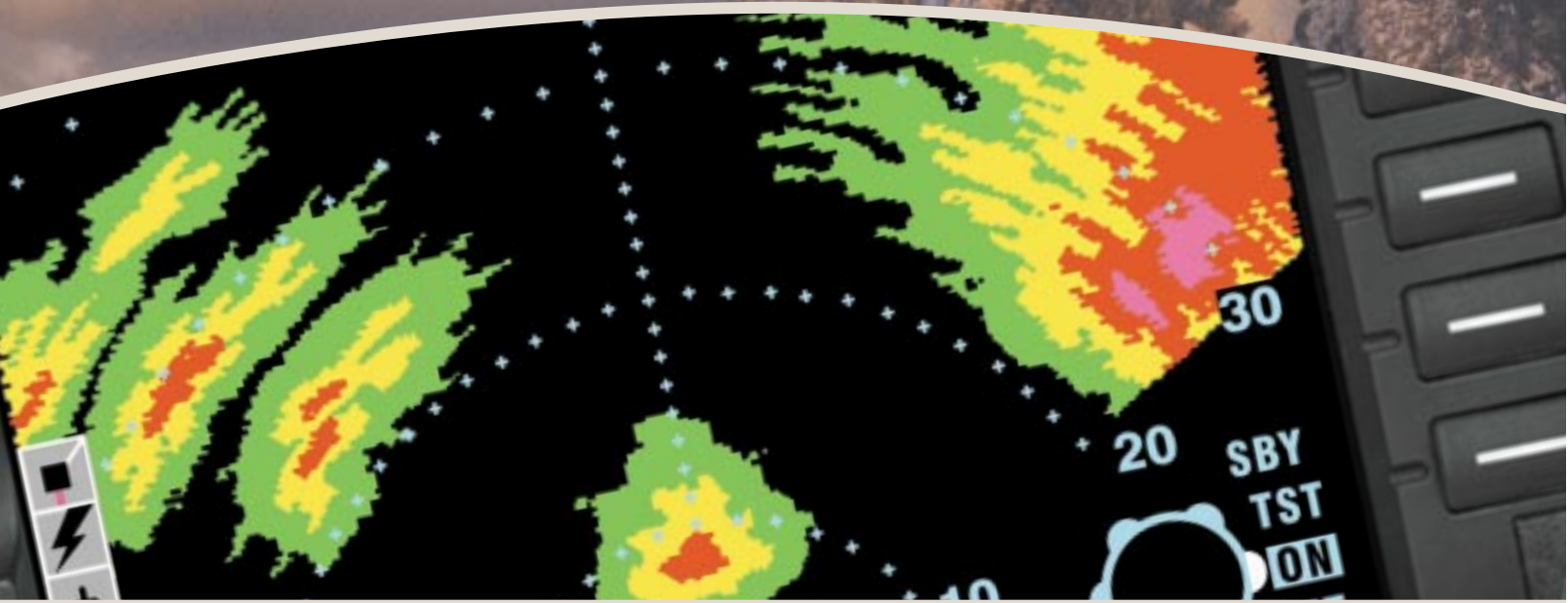


# ART 2000 ART 2100 Digital Weather Radars



SEAMLESS SAFETY INTEGRATION THROUGH IHAS

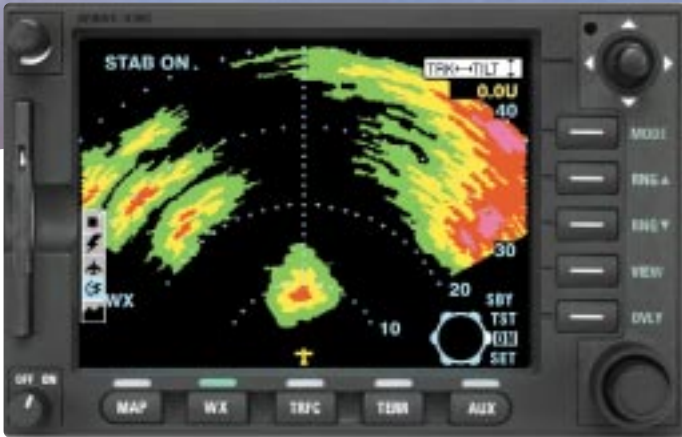
**BENDIX/KING**

EQUIPPED WITH CONFIDENCE.

# ART 2000 ART 2100 Digital Weather Radars

## Safety Through Advanced Technology

Honeywell's Bendix/King ART 2000 and ART 2100 Digital Weather Radar Systems utilize the latest in digital weather avoidance technology. Coupled with the new Bendix/King KMD 850 Multi-Function Display, these systems offer you a clear depiction of not only weather radar, but also allows for the overlay of your flight plan, traffic and even lightning data for enhanced situational awareness. In addition, you have a more complete picture of the storm through the benefit of Vertical Profile®: an exclusive vertical view of the cross-section of a storm. Coupled with optimized sensitivity control and antenna stabilization, the ART 2000 and ART 2100 offer the best weather picture available to General Aviation.



Shown here displayed on a KMD 850 Multi-Function Display

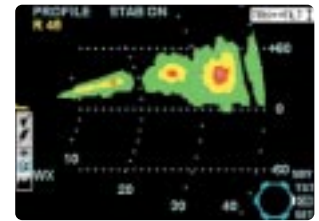
## COMPLETE THE PICTURE OF SAFETY

With a long history of innovation in airborne weather radar technology, Bendix/King engineers have brought digital technology to General Aviation in the ART 2000 and ART 2100.

The intuitive colors used by the ART 2000 and ART 2100 paint a vivid picture of weather, making it easy for you to avoid dangerous weather systems. Using Sensitivity Time Logic, the system correlates target distance with intensity, and its attenuation compensation reduces shadowing. Four vibrant colors (green, yellow, red, magenta) depict the weather intensity.

## VERTICAL PROFILE®

While any radar can give you a lateral picture of a storm, only Bendix/King's exclusive Vertical Profile® can give you a vertical picture, allowing you to see what other radars can't.



The simple press of a button allows you to analyze a storm segment vertically, giving you the information you need to determine the scope of the storm. Monitor the tops of cells to see how quickly a storm is building. Check the angle of a cell's leading edge to see if it's moving. You can

Display	Rainfall Rate		Video Integrated Processor (VIP) Categorizations				Remarks
	mm/Hr.	In./Hr.	Storm Category	VIP Level	Rainfall Rate		
					mm/Hr.	In./Hr.	
4 (Magenta)	Greater than 50	Greater than 2	Extreme	6	Greater than 125	5	Severe turbulence, large hail, lightning, extensive wind gusts and turbulence.
			Intense	5	50-125	2-5	Severe turbulence, lightning, organized wind gusts, hail likely.
3 (Red)	12-50	0.5-2	Very Strong	4	25-50	1-2	Severe turbulence likely, lightning.
			Strong	3	12-25	0.5-1	Severe turbulence, possible lightning.
2 (Yellow)	4-12	0.17-0.5	Moderate	2	2.5-12	0.1-0.5	Light to moderate turbulence is possible with lightning.
1 (Green)	1-4	0.04-0.17	Weak	1	0.25-2.5	.01-0.1	Light to moderate turbulence is possible with lightning.
0 (Black)	Less than 1	Less than 0.4					

also use Vertical Profile® to recognize the difference between weather and ground returns.

## ANTENNA STABILIZATION

Antenna stabilization, an electro-mechanical means of maintaining a selected beam relative to earth's horizon, keeps your screen clear of ground returns during moderate aircraft maneuvers. Select from two antennas, the 10-in. or the 12-in., to fit a wide variety of airframe applications.

## EXTENDED POWER OF THE ART 2100

While the ART 2000 provides the high reliability and quality you expect from Bendix/King, the ART 2100 adds 50% more power, 120° view versus 90° and a 320 nm range versus 240 nm. Additional ART 2100 features include:

- **Autorange limiting** - alerts you to areas that radar energy cannot penetrate
- **Sector scans** - allows you to reduce the scan time to concentrate on the area you most want to review
- **Auto tilt** - automatically manages tilt angle as the aircraft climbs or descends



IHAS 8000

## The IHAS Connection

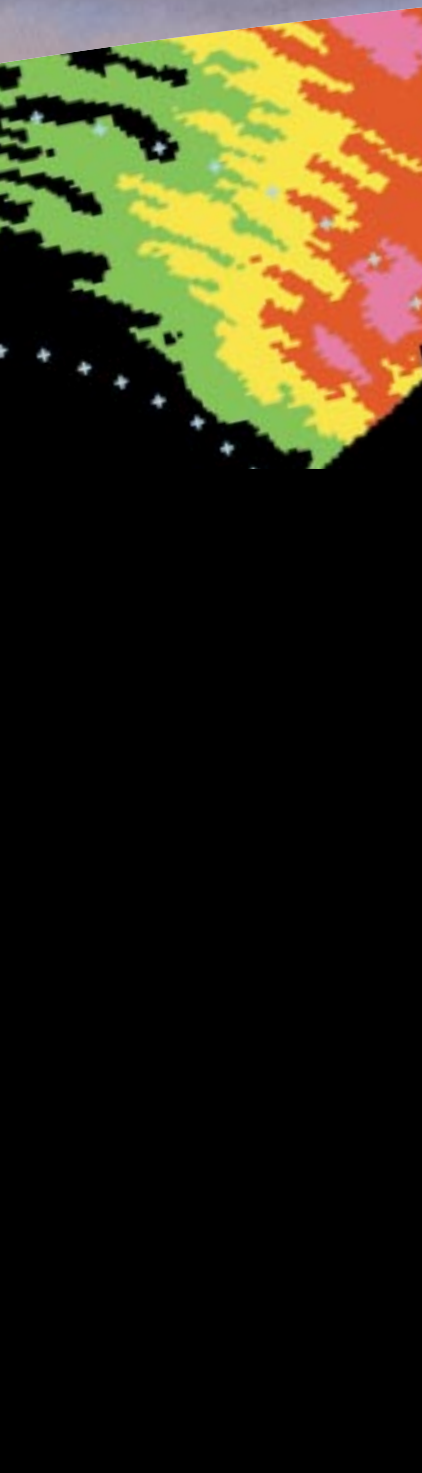
As revolutionary as the ART 2000 and ART 2100 are by themselves, they offer even greater capability as an element of the Integrated Hazard Avoidance System (IHAS.)

Either system is available as part of IHAS 8000. The systems integrate the four major airborne safety systems: positioning, weather avoidance, traffic advisories and terrain warning — on one easy-to-read Multi-Function Display.

IHAS is simply the most comprehensive safety and situational awareness system ever offered to General Aviation.

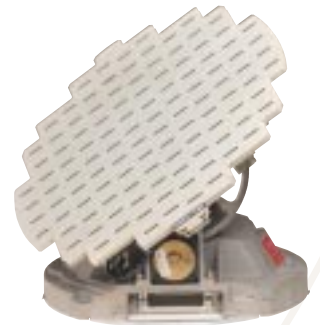
## Key Benefits

- High life magnetron
- Vertical Profile® display
- Microprocessor-based antenna stabilization
- Bright four-color digital display
- High-reliability design



## ART 2000

Power Requirements: . . . . .28 VDC 3.0A  
 Output (rated): . . . . .4.0 kW  
 Antenna Size: . . . . .10 in., 12 in.  
 Scan Angle: . . . . .90°/100°  
 Tilt Angle: . . . . .±15°  
 VP Scan Angle: . . . . .±30°  
 Antenna Scan Rate: . . . . .25°/second  
 Weather Avoidance: . . . . .240 NM, 12" typical  
 Pulse Width: . . . . .4 microseconds  
 Weight: . . . . .9.9 lbs. (4.5 kg)  
 Max. Altitude: . . . . .55,000 ft. unpressurized  
 TSO Compliance: . . . . .C63c Class 7  
 DO 160C Environmental Categories: . F2-BA(CLMY)E1XXXXXA(BZ)(AB)(BZ)ARA(A2C2)XX



## ART 2100

Power Requirements: . . . . .28 VDC 3.0A  
 Output (rated): . . . . .6.0 kW  
 Antenna Size: . . . . .10 in., 12 in.  
 Scan Angle: . . . . .90°/100°/120°  
 Tilt Angle: . . . . .±15°  
 VP Scan Angle: . . . . .±30°  
 Antenna Scan Rate: . . . . .25°/second  
 Weather Avoidance: . . . . .320 NM, 12" typical  
 Pulse Width: . . . . .4 microseconds  
 Weight: . . . . .9.9 lbs. (4.5 kg)  
 Max. Altitude: . . . . .55,000 ft. unpressurized  
 TSO Compliance: . . . . .C63c Class 7  
 DO 160C Environmental Categories: . F2-BA(CLMY)E1XXXXXA(BZ)(AB)(BZ)ARA(A2C2)XX



©2001 Honeywell International Inc.  
 6/01 006-18271-0000 10K Printed in USA

**Policy Notice:** Avionics installations require special skills, tools and test equipment. Our limited warranty is valid only for equipment installed in accordance with our sales and service policies.

In keeping with our policy of continual product improvement, designs and specifications may be altered without notice.

**Honeywell**  
 23500 W. 105th Street, Olathe, KS 66061-1950  
 Telephone 913.712.2613 Fax 913.712.5697  
 Toll-Free in U.S. 877.712.2386  
[www.bendixking.com](http://www.bendixking.com)

**BENDIX/KING**  
 EQUIPPED WITH CONFIDENCE.